

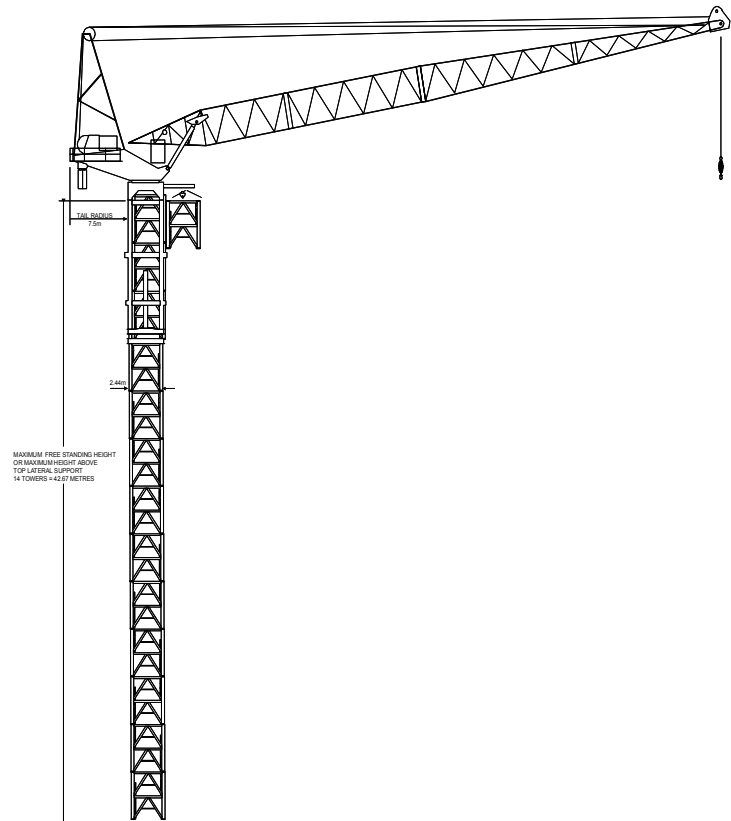
# SELECT CRANES

## AND RIGGING

CALL 1300 4 CRANES

### FAVCO STD TOWER CRANE

Radius	Main Boom Length		
	32.6	41.9	48.3
3.6	24000	24000	
4.5	21000	21000	
5.2	19500	19500	
6.1	18000	18000	
7.6	16500	16500	
9.9	15000	15000	
12.2	13500	13500	
15.2	12000	12000	12000
16.7		12000	
17.3	12000		
19.8		10500	
20.7	10500		
21.3			7500
22.8		9000	
24.3	9000		
25.9	8500		
26.8		7500	
27.4			5500
28.3	7500		
30.5	7000		
32.0		6000	
33.5			4000
39.6		4500	3000
45.7			2230



#### Notes on Double Fall

Double fall capacities are shown in shaded area.  
 Double fall capability available on 32.6m and 41.9m booms only.  
 Double fall radius is not to exceed 15.2 metres.  
 48.3m boom available in single fall only.

#### Notes on Single Fall

Maximum capacity for radii less than 15.2 metres is not to exceed 12000 kg.  
 All capacity charts are based on 60 metres of 32mm rope below the jib head. Any additional rope weight to be deducted from load  
 Rope weight = 400kg / 100m.

